



# TURNTABLE

Volume 1, Number 4

September 2017

The NMRA's *Turntable* is a monthly publication which, like a railroad turntable, will lead you in a number of directions on the internet.

This e-publication is a collection of railroad and model railroad videos, podcasts, websites, and/or other information freely available on the internet that we think may be of interest to you. The NMRA claims no ownership of this information, nor do we endorse its creators or their websites. The *NMRA Turntable* will not promote individuals or their for-profit ventures.

## 2017 NMRA Orlando National Convention



NMRA National Convention Orlando 17



Kathy Millatt

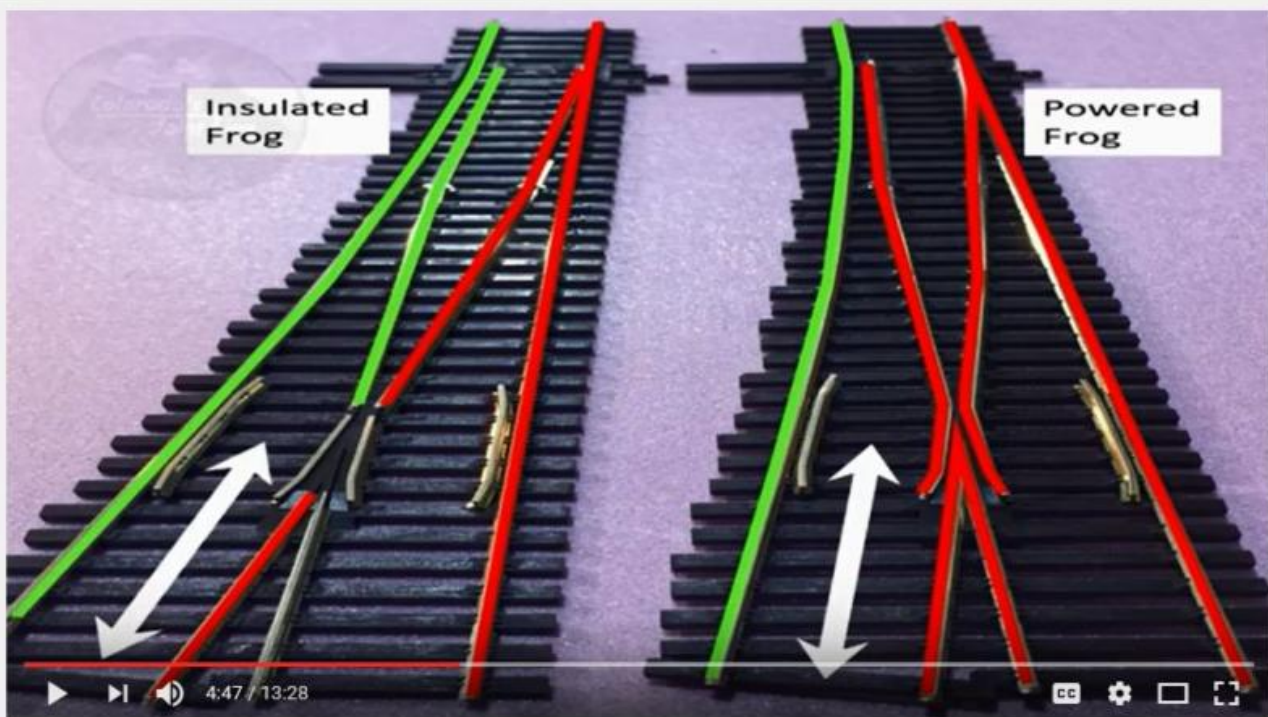
Subscribe 10K

1,696 views

## [NMRA 2017 Orlando National Convention](#)

What there was to see at the Orlando's National Convention & Train Show.

## Peco Insulfrog vs Electrofrog Model Railroad Switches



### Insulfrog VS Electrofrog Model Railroad Switches

Scale Model Trains & Colorado's Joint Line

Subscribe 13K

1,379 views

+ Add to Share ... More

64 0

## Peco Insulfrog vs Electrofrog Switches

An explanation of the differences between model railroad switches with Insulated frog and those with powered frogs. While Peco makes switches in a variety of scales, this video will use HO scale Code 83 Insulfrog and Electrofrog to illustrate the differences between the two.

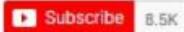
## How to Make a Simple Sanding Station



Simple Sanding Station used on DPM Models. Model Railroad Tools.



ModelerManMike



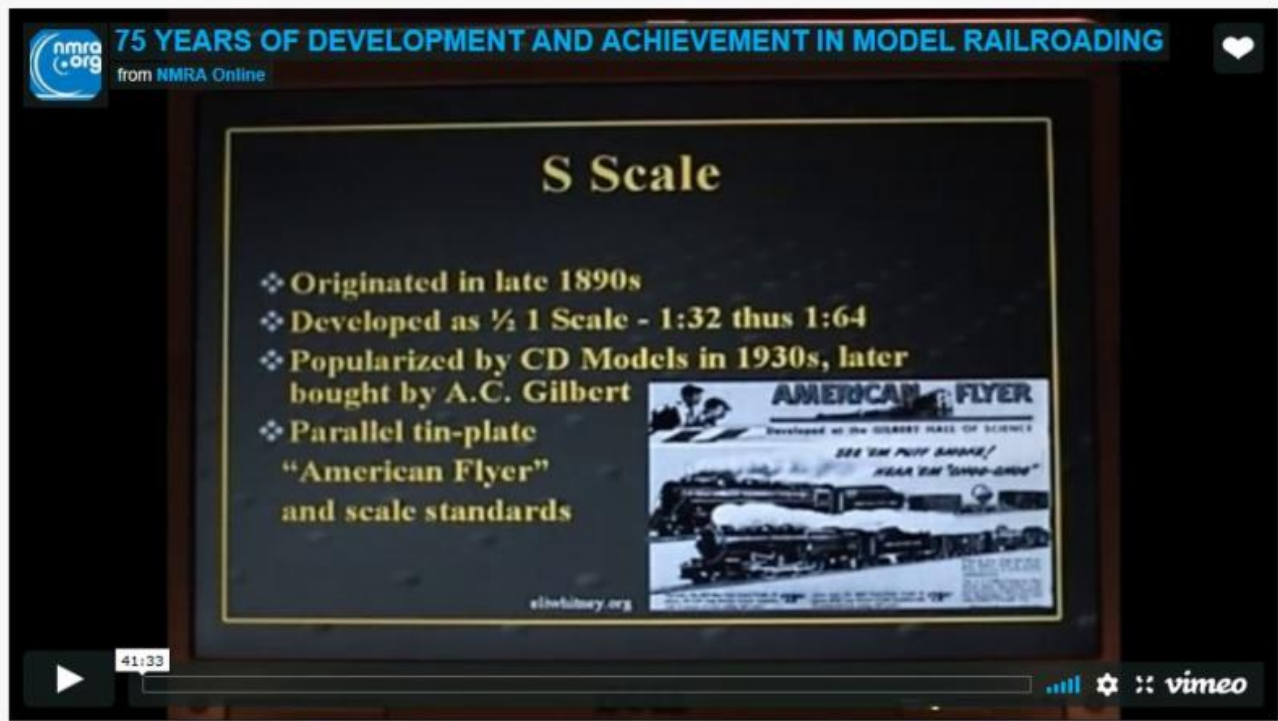
6,850 views

## [How to Make a Simple Sanding Station](#)

NMRA Clinics From Our Members-Only Collection

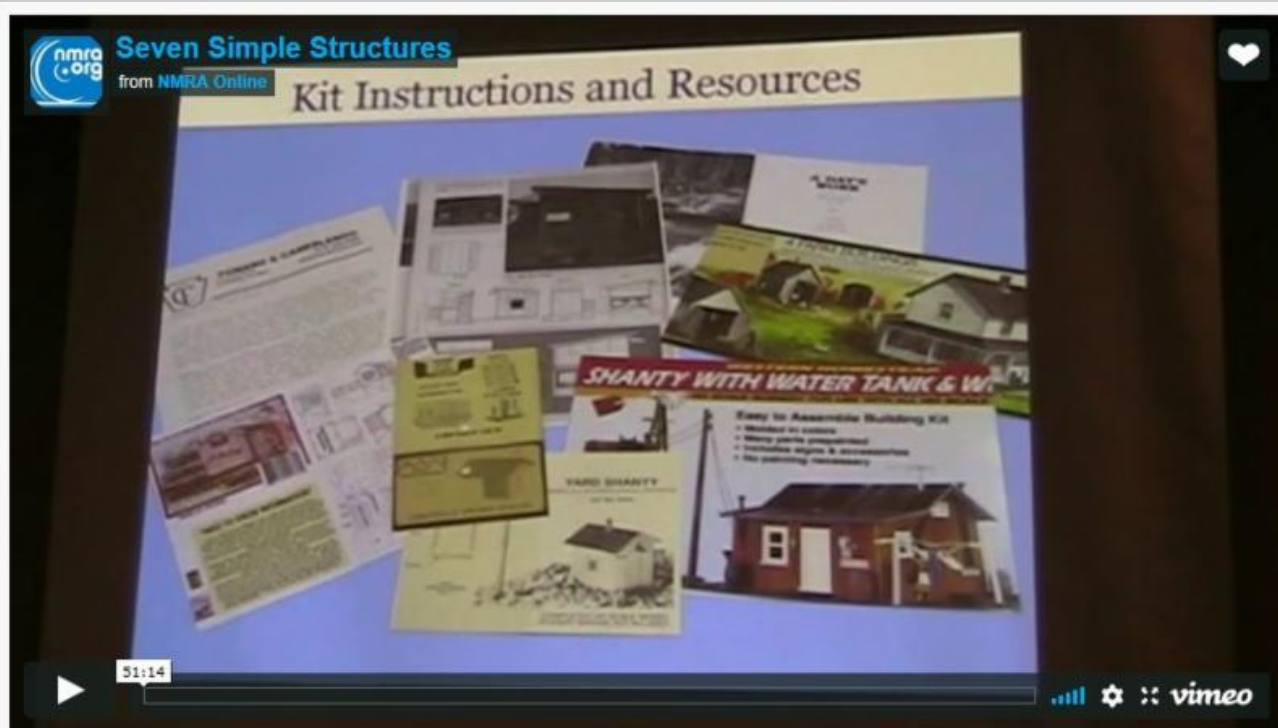
\*\*\* You will need to sign-in as a member to view these video clinics! \*\*\*





A clinic given by Paul Hobbs at the 2010 NMRA 75th Anniversary convention that was held in Milwaukee, Wisconsin.

## [75 Years of Model Railroading](#)



Another clinic from the 2010 Milwaukee convention is Sam Swanson's "Seven Simple Structures". Sam covers methods for building structures from a variety of common materials. Examples include scratchbuilt and kitbashed sheds, a garage, well house, outhouse, and cottage residence.

## [Seven Simple Structures](#)

### Best of the Rest

#### Walthers SD70ACe Review & "Helical Gears" Explained



Walthers SD70 ACe review and Helical gears explained.



FishplateFilms



Subscribe

4.6K

3,308 views

## [Review of the Walthers SD70ACe](#)

#### Buckeye Limited Convention: 1.5" Scale UP Challenger



The Steam Channel

Buckeye Limited: 1.5" Scale Union Pacific Challenger



The Steam Channel

Subscribe 23K

77,199 views

## [Live Steam 1.5" Scale UP Challenger](#)

First in a multipart series, this video shows the Buckeye Limited Convention at a glance. Union Pacific Challenger #3977 is fired up and then taken through the yard at the Mill Creek Central Railroad.

**The Construction of a 12 Inch = 1 Foot Turntable**





The construction of the turntable



GCRofficial



5,130 views

## [Construction of a 12 Inch = 1 Foot Turntable](#)

A quick look at the construction of the turntable at Quorn & Woodhouse station on the Great Central Railway. Tony Sparks narrates and, through time-lapse photography, we follow the 14 week construction in just a few minutes.

## **[French Model Railway Modular Layout in N Scale](#)**



French Model Railway Layout in N Scale



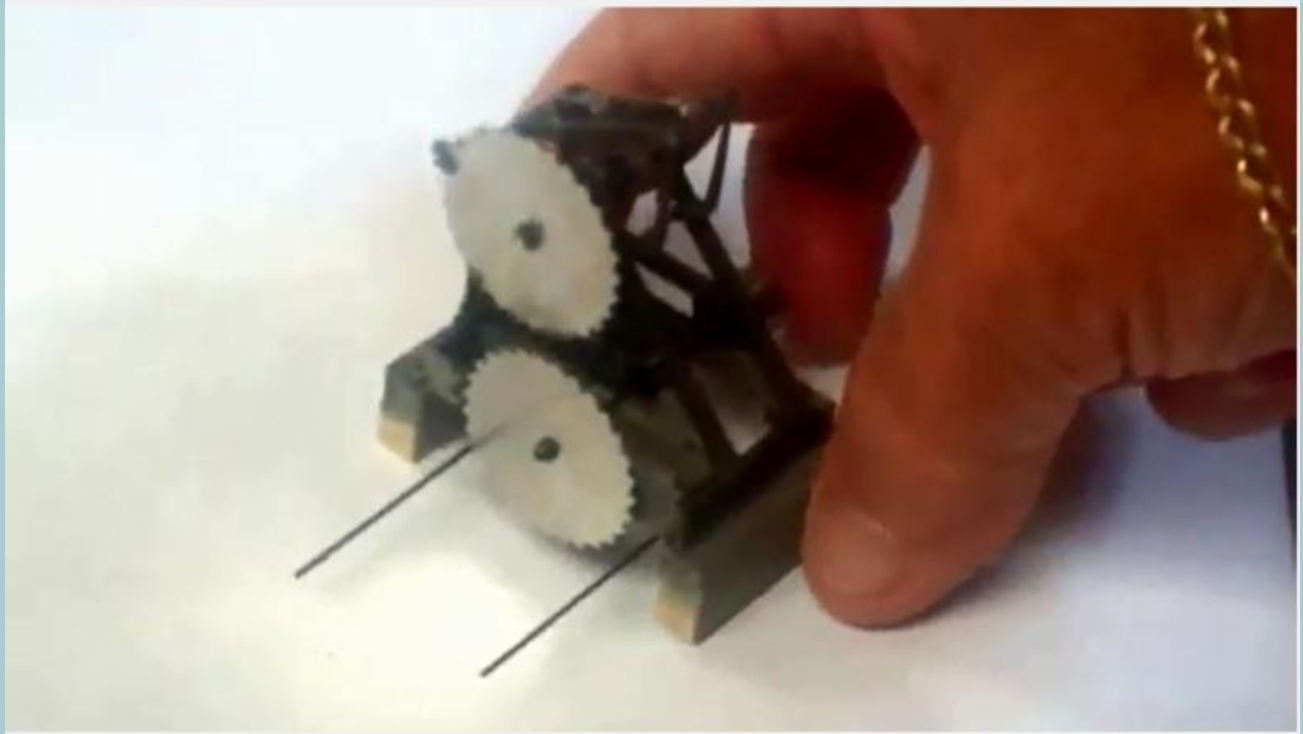
35,378 views

## [N Scale French Model Railway Modular Layout](#)

The French model railway club, Association Francaises des Amis du N, presented its large modular model train layout called "The Train Station of Chalon-sur-Saone".

## **Building an O Scale Saw Mill - Part 6**





### Part 6: Building a Sawmill



Lex Parker

 **Subscribe** 3.6K

6,643 views

## [Part 6 of a Series on Scratch Building a Saw Mill](#)

A series on how to scratch build a sawmill for a model railroad layout.

**Simple Chipping Techniques for Vehicles or Scenery**

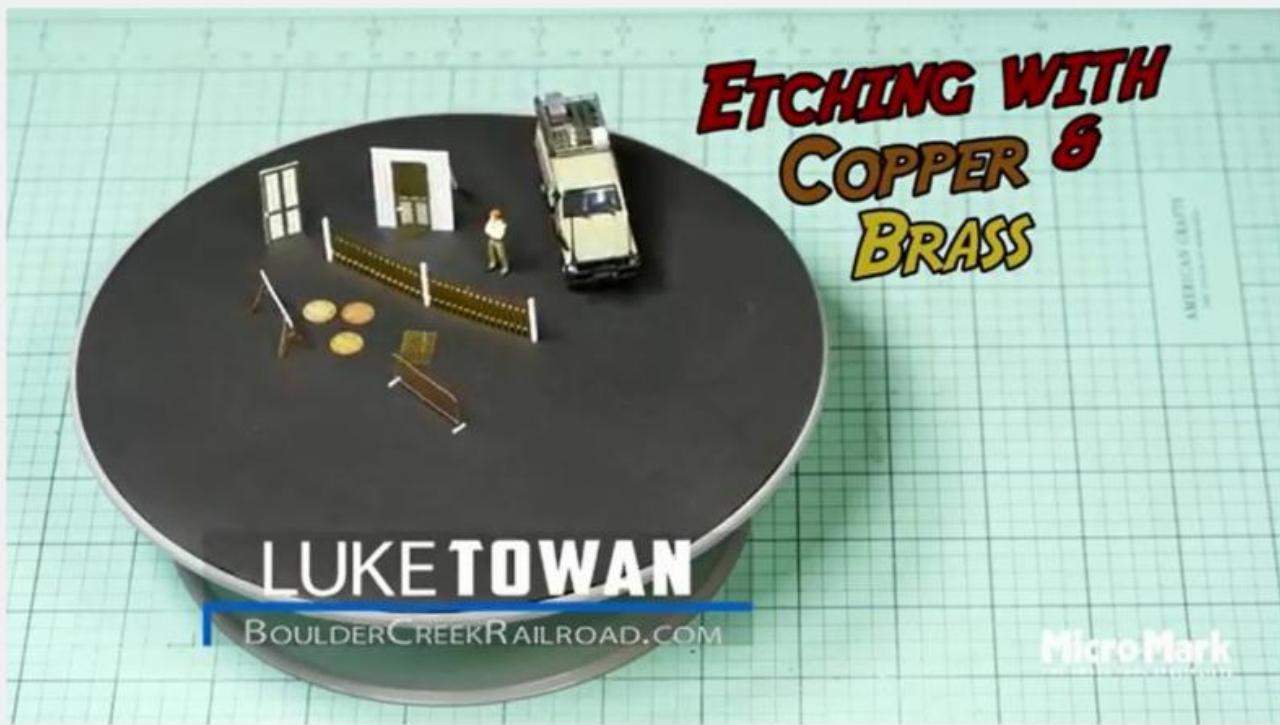


## [Simple Chipping Techniques](#)

From our Military Modeling friends, this video shows us how to model chipped paint.

## Videos From Our Partners

### [\*\*All About Photo-Etching\*\*](#)



#### All About Photo-Etching



29 views

Our Partner, Micro-Mark, provides a complete overview of photo-etching to assist with your layout designs!

## [All About Photo-Etching](#)

Don't forget to visit the [Partnership Program](#) page on our website to get great deals and discounts!

::

Editor: [Paul V. Voelker](#)

Contributing Editors: Tom Bensberg and Philip Sharp

Executive Editor: [Gerry Leone](#), [MMR](#), [HLM](#)

*The NMRA Turntable is an official monthly production of the National Model Railroad Association, Inc. Publishing Department ([Don Phillips](#), Manager). Its purpose is to introduce NMRA members to a selection of instructional videos and online publications that they may find of interest. If you know of an NMRA member who is not receiving this mailing, please direct them to [here](#) to update their email address. If you no longer wish to receive these mailings, please don't mark them as SPAM. Instead, click the Safe Unsubscribe link at the bottom of this page. ©2017 National Model Railroad Association, Inc., P.O. Box 1328, Soddy Daisy TN 37384.*

STAY CONNECTED:

