



# TURNTABLE

Volume 2, Number 9

September 2018

The NMRA's *Turntable* is a monthly publication which, like a railroad turntable, will lead you in a number of directions on the internet.

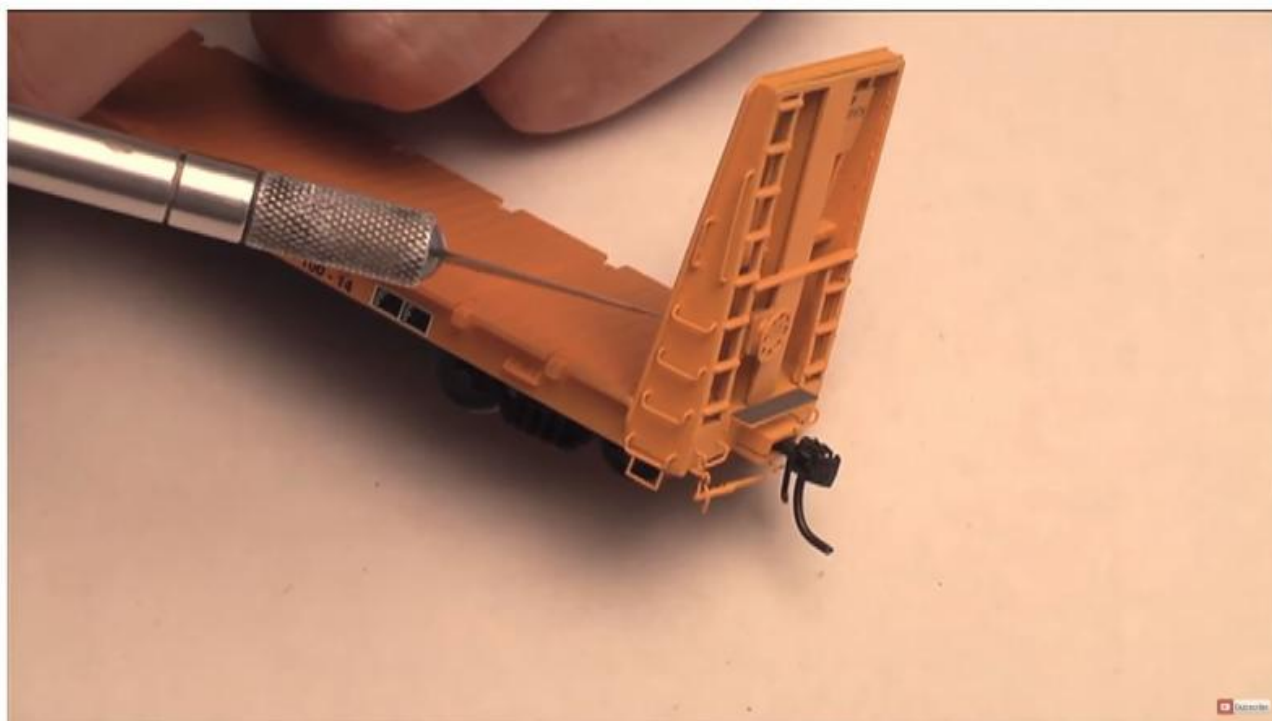
This e-publication is a collection of railroad and model railroad videos, podcasts, websites, and/or other information freely available on the internet that we think may be of interest to you. The NMRA claims no ownership of this information, nor do we endorse its creators or their websites. The *NMRA Turntable* will not promote individuals or their for-profit ventures.

## A Members-Only Exclusive Clinic from Model Railroader Video Plus



[Copper Basin Railway](#)

Host Drew Halverson and the motley MR Video-Plus crew meet in the Arizona desert for a WIP visit to the Copper Basin Railway. In this episode, CBR president Jake Jacobson brings the guys to an active bridge replacement site, hosts a hi-rail tour of the line, and even gets Drew a cab ride. Enjoy this behind-the-scenes tour of exciting Arizona railroading, free to NMRA members, but only until the next month's *Turntable* arrives in your inbox!



HO Scale Weathering & Detailing A Bulkhead Flatcar 12-1-10 Podcast

## [Detail and Weather a Bulkhead Flatcar](#)

Dan shows us a Bulkhead Flatcar and demonstrates some detailing and weathering techniques on it.



How to make tarpaulins for your model railway wagons

## [How to Make Tarpaulins](#)

How to make tarpaulins for your railway wagons and loads.



MaxYield Co-op 100 Rail Car Loading Process



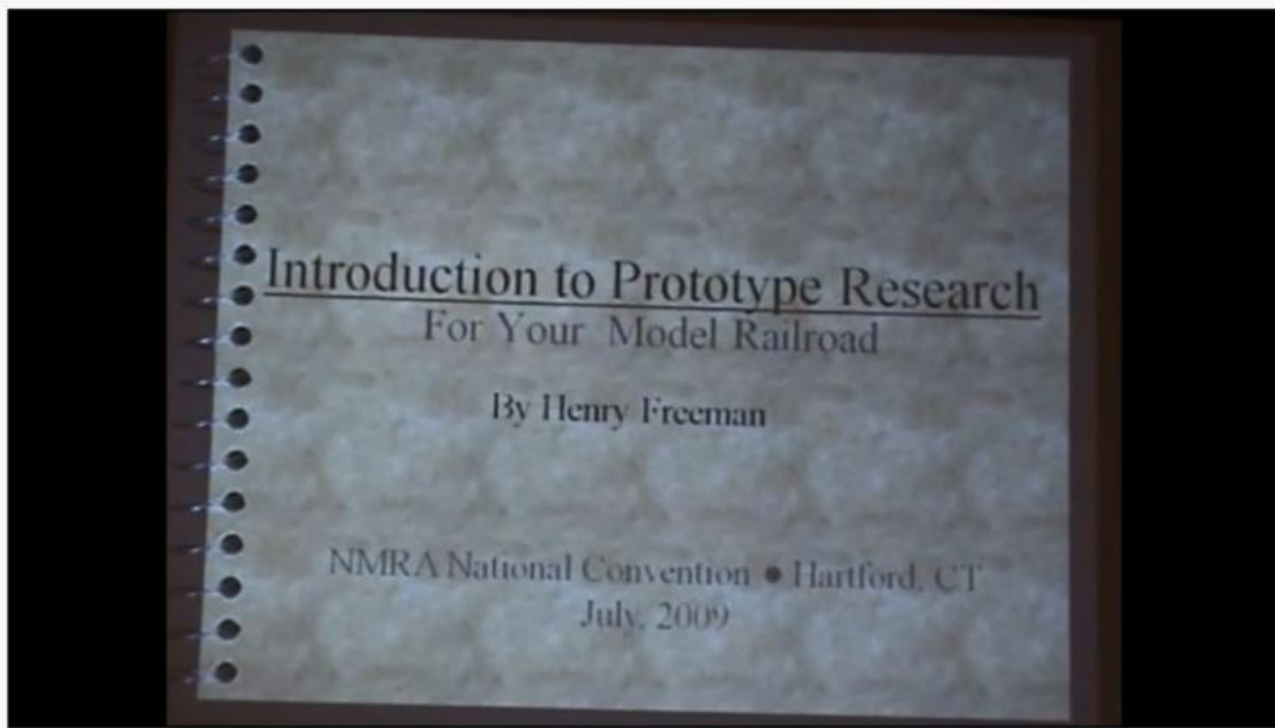
## [Loading 100 Grain Cars](#)

A MaxYield Cooperative video showing the grain loading process at their facility in West Bend, Iowa.



# NMRA Clinics From Our Members-Only Collection

\*\*\* You will need to sign-in as a member to view these video clinics! \*\*\*



## Introduction to Prototype Research

A clinic from the 2009 Hartford National Convention presents an introduction to doing prototype research for your layout.

**Best of the Rest**



2018 NMRA National Train Show - Kansas City, Missouri

## [KC2018 NMRA National Train Show](#)

A walk around the NMRA National Train Show at the just-concluded Kansas City NMRA Convention including many model railroad manufacturers' new products and several of the model railway layouts that were present.



## [Last Run of the Operations Roadshow](#)

The 2018 Kansas City National Convention was the last appearance of the Operations Roadshow at an NMRA national convention. Take a look at one of the operating sessions during the convention.





## [A Preview of Salt Lake City 2019](#)

The 2019 National NMRA Convention will be held in Salt Lake City on July 7-13, 2019. This is a brief overview of some local layouts and area attractions. We hope you visit us and have fun at the convention as we celebrate the 150 year anniversary of the driving of the Golden Spike.





Adding Realistic Details to Vehicles – Model Scenery

## [Adding Realistic Details to Vehicles](#)

Adding detail to vehicles can rapidly transform a scene from good to awesome. In this video Luke shows that adding some simulated dirt, some crates and details can make for a very realistic appearance.



Scratch build realistic dovetailed log cabin

## [Scratchbuild a Dovetail Log Cabin](#)

The presenter shows how to build a realistic dovetailed log cabin from balsa. The video contains several good scratchbuilding tips.



50th Anniversary of the Great Dorset Steam Fair - 24/08/2018

## [The Great Dorset Steam Fair](#)

The Great Dorset Steam Fair has been going on for 50 years as of 2018. This year's Golden Jubilee featured over 500 Steam-Engines featuring Traction Engines, Showman's Engines, Ploughing Engines and Steam Rollers, some from as far as Ireland, Canada, the United States and New Zealand!





LS&I Railroad: Unloading the Marquette Ore Dock (Remastered Version)

## [Unloading the Marquette Ore Dock](#)

The video shows the entire operation of the Lake Superior & Ishpeming Railroad moving cars from the Empire Mine and the Tilden Mine in Marquette County to the 100 pocket ore unloading dock and the operation of the dock itself when loading a ship.

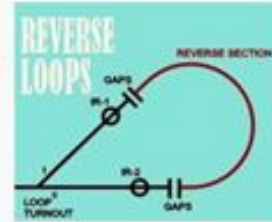
Z

[Division Business Car](#)

## Automating Turnouts and a Reverse Loop

Featured in the Division Business Car Column appearing in the August, 2018 issue of the NMRA Magazine

Whether its a dog bone or a simple reverse loop, here's how to automate it



## Railfanning the Michigan lines railroad of Jay and Brook Qualman

Featured in the Division Business Car Column appearing in the August, 2018 issue of the NMRA Magazine

A virtual tour starring the 1950's era Pere Marquette RR

## Sectional Benchwork, a variation on the domino theory

Featured in the Division Business Car Column appearing in the August, 2018 issue of the NMRA Magazine

To satisfy numerous requests, A reprint from deep in the NMRA's vault



## GETTING WIRED: Soldering

Featured in the Division Business Car Column appearing in the August, 2018 issue of the NMRA Magazine

Some basic Do's and Don'ts to make soldering less intimidating



Click for related article

## [Division Business Car](#)

The *Division Business Car* column appears in even-numbered months in NMRA Magazine. It's loaded with great modeling ideas, plus useful information that can help make your Division, Region or 100% NMRA Club even better. The information comes from articles published in Region, Division, and club newsletters. The best of these articles are posted on the NMRA website. You can read the entire archive, from as far back as 2011 right up to the latest posting, by clicking [here](#).

**Don't forget to visit the [Partnership Program](#) page on our website to get great deals and discounts!**

Previous issues of the *NMRA Turntable* are available on the Turntable Archives page. You must first log in as a member at: [nmra.org](#) After you are in the members-only section, then hover over Publications on the menu bar, then *NMRA Turntable*, and then click on one of the list of back issues.

Editor: [Paul V. Voelker](#)

Contributing Editor: Philip Sharp

Executive Editor: [Gerry Leone](#), [MMR](#), [HLM](#)

*The NMRA Turntable is an official monthly production of the National Model Railroad Association, Inc. Publishing Department ([Don Phillips](#), Manager). Its purpose is to introduce NMRA members to a selection of instructional videos and online publications that they may find of interest. If you know of an NMRA member who is not receiving this mailing, please direct them to [here](#) to update their email address. If you no longer wish to receive these mailings, please don't mark them as SPAM. Instead, click the Safe Unsubscribe link at the bottom of this page. ©2017 National Model Railroad Association, Inc., P.O. Box 1328, Soddy Daisy TN 37384.*

STAY CONNECTED:

