

THOUGHTS ON BUILDING SCALE STRUCTURES

**SO, YA WANNA HAVE
SOME STRUCTURES
ON YOUR LAYOUT,
HEH?**

POLL

- How many build or have built structures?
- How recently?
- What have you learned?
- Whadya wanna learn?

STRUCTURES INCLUDE:

- **BUILDINGS**
- **BRIDGES**
- **WALLS, PIERS, TOWERS**

READY-MADE & BUILT-UP KITS

- WIDELY AVAILABLE
- EXPENSIVE
- MAY NOT BE RIGHT FOR YOUR ERA,
COLORS, ARCHITECTURAL DETAILS,
MATERIALS
- \$ EXPENSIVE \$
- \$\$ EXPENSIVE \$\$

CUSTOM-MADE STRUCTURES

- **SOMEONE BUILDS IT FOR YOU**
- **YOU GET EXACTLY WHAT YOU WANT**
- **EXPENSIVE**

DIY

WHAT IF YA WANNA

DO IT YOURSELF?

DIY BASICS

HAVE A CONCEPT OF WHAT YOU WANT

HAVE PHOTOS OR OTHER REFERENCES

HAVE A LIST OF FEATURES TO INCLUDE

SELECT A KIT

**THE WORLD OF
STRUCTURE KITS IS**

HUGE

TODAY THERE ARE...

PLASTIC KITS

“CRAFTSMAN” KITS

LASER-CUT KITS

RESIN, PLASTER, OTHERS

PLASTIC KITS

- HAVE BEEN AROUND FOR DECADES
- EASE OF ASSEMBLY VARIES WITH SUBJECT

EXAMPLES:

PLASTICVILLE, MODEL POWER,
LIFE LIKE — HELJAN, KIBRI,
WALTHERS

“CRAFTSMAN” KITS

- HAVE BEEN AROUND FOREVER
- COMPLEX INSTRUCTIONS
- ADVANCED SKILLS REQUIRED CUT AND ASSEMBLE PARTS
- SOME FABRICATION OF COMPONENTS NECESSARY

EXAMPLES:

CAMPBELL, SOUTH RIVER

LASER-CUT KITS

- READILY AVAILABLE
- STRAIGHTFORWARD ASSEMBLY
- GREAT DETAILS

EXAMPLES:

JL INNOVATIONS, BAR MILLS, BEST

KEYS TO SUCCESS

PATIENCE

PREPARATION

READING THE DIRECTIONS

FOLLOWING THE DIRECTIONS

FOLLOWING THE DIRECTIONS

CAN'T BE BOTHERED WITH DIRECTIONS?

ALTERNATIVES FOR NON-CONFORMISTS

FOR THOSE WHO:

- ARE FREE-SPIRITED
- ENJOY LIVING LIFE ON THE EDGE
- THINK OUTSIDE THE BOX
- RELISH STRUCTURED CHAOS

KITBASHING

- COMBINES PARTS OF MULTIPLE KITS
- HAS SOME “CUTTING AND PASTING” AND DESIGN CHALLENGES
- MAY REQUIRE FILLING IN THE GAPS
- GETS CLOSE TO WHAT YOU WANT

SCRATCHBUILDING

- TAKES ADVANTAGE OF STRUCTURAL BUILDING MATERIALS AND DETAIL PARTS
- LOTS OF FLEXIBILITY OF DESIGN
- INFINITELY CUSTOMIZABLE
- HUGE VARIETY OF COMPONENTS IS AVAILABLE
- VARIOUS MATERIALS
- VERY CLOSE TO WHAT YOU WANT IN BUILDING MATERIALS AND ARCHITECTURE

WHATEVER ROUTE YOU TAKE...

- YOU WILL NEED...
 - MATERIALS
 - ADHESIVES
 - TOOLS
 - DETAILS
 - FINISHING

MATERIALS

- BASS WOOD, BALSA
- STYRENE
- METAL, PLASTER, RESIN, ETC.

ADHESIVES

APPROPRIATE TO THE MATERIAL

- CARPENTER'S OR WHITE GLUE
- TENAX, ETC. FOR STYRENE
- CYANOACRYLATE
- RUBBER CEMENT

TOOLS

- SHARP KNIVES
- FILES
- STRAIGHTEDGE/SCALE RULE
- GLASS PANE
- BUILDING SQUARE

DETAILS

- WINDOWS AND DOORS
 - ROUND TOP, OVERHEAD, SHUTTERS, ETC.
- ROOFING MATERIALS
 - SHINGLES, TAR PAPER, ETC.
- ROOFING DETAILS
 - CHIMNEYS, DUCT WORK, PIPING, VENTING, ETC.
- FENCES, STAIRCASES, FIRE ESCAPES, ETC.
 - NUMEROUS SUPPLIERS

FINISHING

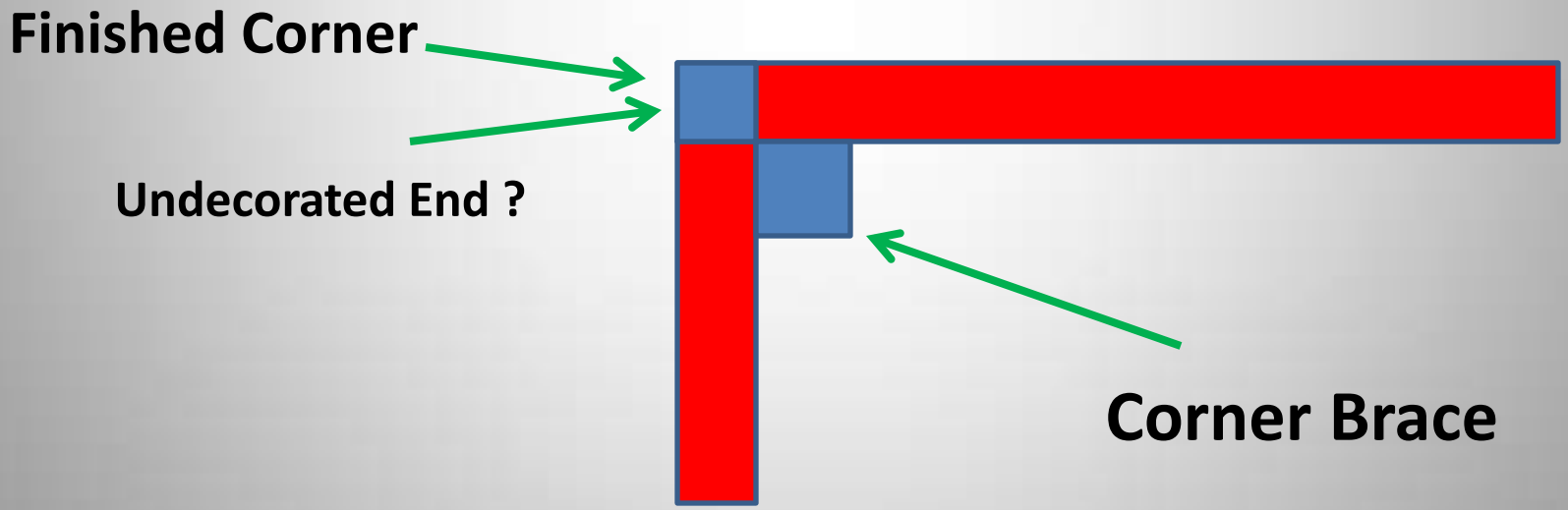
- PAINTS
- WEATHERING
- “DIARAMA-ING”
 - LANDSCAPING
 - VEHICLES
 - FIGURES
- INTERACTION WITH LAYOUT

ITEMS TO CONSIDER

- STRUCTURAL INTEGRITY
- SCALE
- VISUAL EFFECT
- PURPOSE
- ACCESS FOR MAINTENANCE

STRUCTURAL INTEGRITY

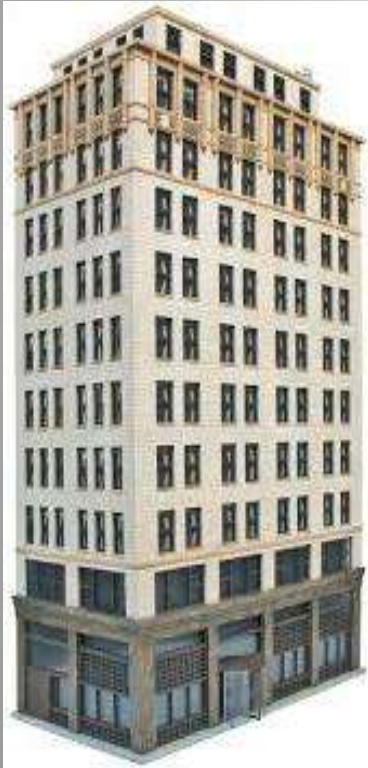
CORNER JOINT



SCALE



VISUAL EFFECT



PURPOSE



ITEMS TO CONSIDER

- STRUCTURAL INTEGRITY
- SCALE
- VISUAL EFFECT
- PURPOSE
- ACCESS FOR MAINTENANCE

QUESTIONS?