



TURNTABLE

Volume 2, Number 1

January 2018

The NMRA's *Turntable* is a monthly publication which, like a railroad turntable, will lead you in a number of directions on the internet.

This e-publication is a collection of railroad and model railroad videos, podcasts, websites, and/or other information freely available on the internet that we think may be of interest to you. The NMRA claims no ownership of this information, nor do we endorse its creators or their websites. The *NMRA Turntable* will not promote individuals or their for-profit ventures.

How to Paint a Faux Concrete Finish



How To Paint A Faux Concrete Finish For Miniatures



Scale Scratch Builder

Subscribe 6.4K

10,388 views

[How to Paint A Faux Concrete Finish](#)

Scale-size concrete can be simulated with just three colors of paint, some scraps of sponge, and a couple of brushes. Here is how to do it.

How Prototype Grain Elevators Worked



Grain Elevator

How Prototype Grain Elevators Worked

Historical archive film by the National Film Board of Canada on a day in the life of a rural grain elevator. The film was produced in 1981 and shows the operation of a grain elevator from when the grain is brought in by truck to the loading of box cars for shipment out.

Simple & Easy Gondola Coal Loads



Gondola Loads



Corey Bonsall



Subscribe

74

127 views

[Simple & Easy Gondola Coal Loads](#)

A time lapse of how to make HO scale gondola coal loads.
(Adaptable to all scales.)

Using CAD to Plan Your Model Railroad



Using CAD to Plan Your Model Railroad - A Clinic by Walt Liles (HD)



Bob Wood



1,083 views

[Using CAD to Plan Your Model Railroad](#)

A clinic given at the Piedmont Division of the Southeast Region by Walt Liles on using an easy-to-learn CAD program to plan your model railroad.

NMRA Clinics From Our Members-Only Collection

*** You will need to sign-in as a member to view these video clinics! ***

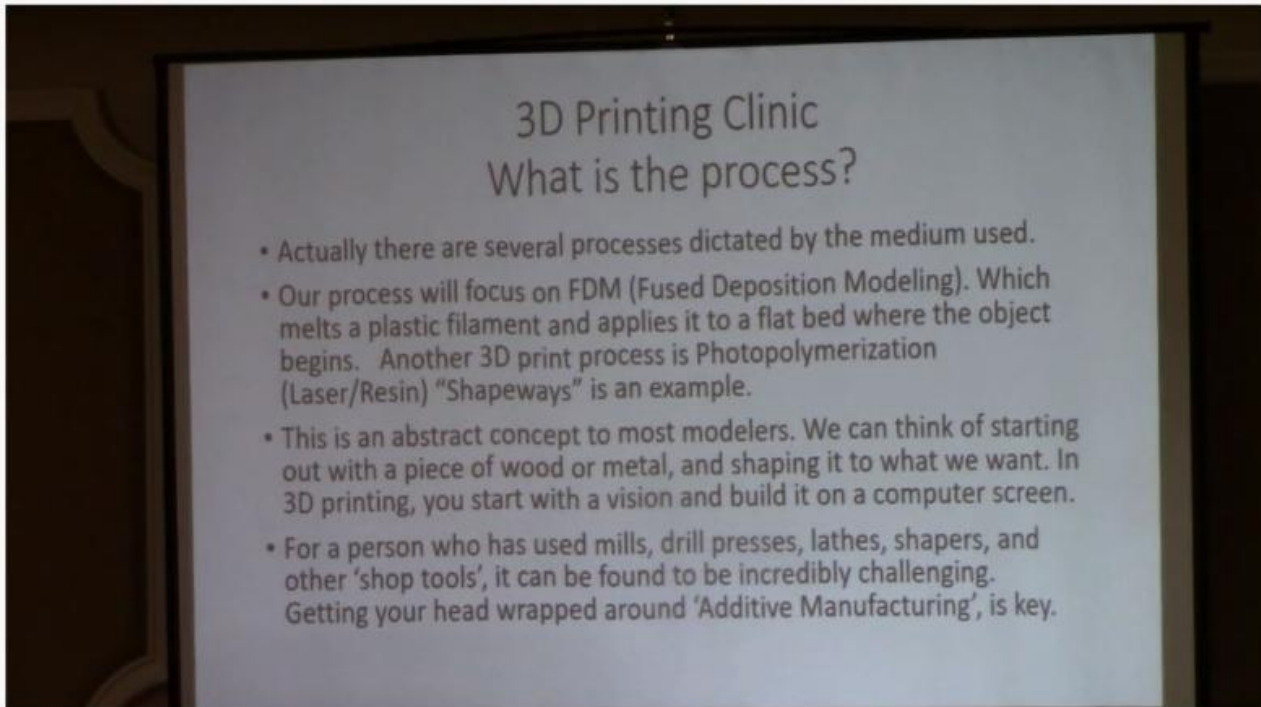
3-D Printing Fundamentals Clinic

3D Printing Fundamentals

Presented by Jim Macino

2017 National Convention, Orlando, FL

Uploaded 10/8/17



[3-D Printing Fundamentals Clinic](#)

This is one of the many clinics that were recorded at the 2017 National Convention in Orlando, in this one Jim Macino discusses the fundamentals of 3-D Printing for model railroads.

V

CTC Demystified - Part 1 of 2

CTC Demystified - Part 1 (Introduction to Centralized Traffic Control Machines)

Presented by Doug Geiger, MMR

2017 National Convention, Orlando, FL

Uploaded: 10/8/17



[CTC Demystified Part 1 of 2](#)

Another video from the recent 2017 NMRA Orlando Convention. In this one Doug Geiger, MMR explains the use of Central Traffic Control machines on a model railroad. Part 2 is also available on the NMRA website.

Best of the Rest

Fen End Pit with Working Dragline



Fen End Pit



paulburkittgray

Subscribe 942

14,792 views

[Fen End Pit with working Dragline](#)

A spectacular working model of a sand quarry built by David Barham and displayed at the Greenwich & District Narrow Gauge Railway Society's Expo Narrow Gauge 2010 show.

Building the Walthers New River Mine



Model Railroad Building Walthers New River Mining Company,
Weathering and more



ModelerManMike

Subscribe 8.7K

153,973 views

[Building the Walthers New River Mine](#)

The Walthers New River Mine is constructed with added details including adding Tichy Open Grate Platforms, a Walthers Fire Escape, and Walthers Roof Details. The model is painted and weathered using various techniques to give a well used appearance.

Operating Railway & Radio Controlled Truck



THE END OF THE LINE



gilesengineer

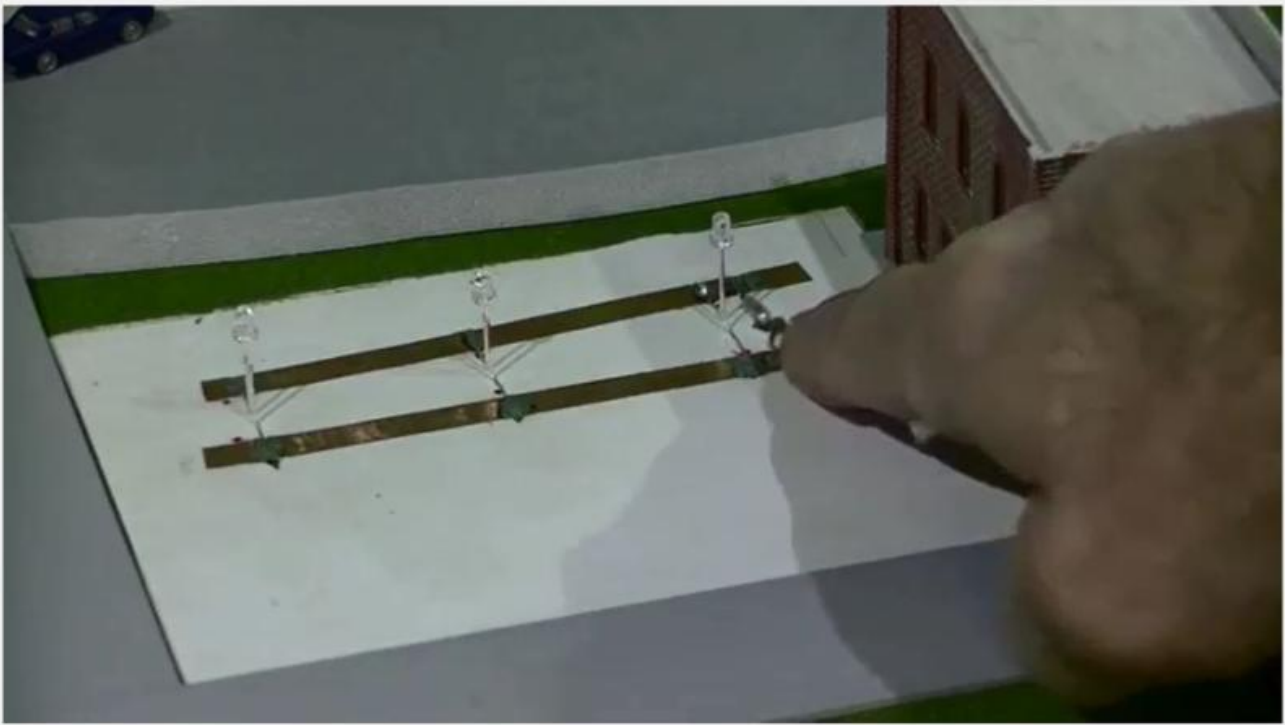
Subscribe 564

31,316 views

[Operating Railway & Radio Controlled Truck](#)

7mm Layout featuring both standard & narrow gauge, with a radio controlled truck which travels around the layout. Winner of the 2012 David Lloyd Memorial Trophy at Expo NG. You really have to keep your eye on the truck!

Wiring Lights using Copper Foil Tape



WIRING LIGHTS WITH COPPER FOIL TAPE FOR MODEL RAILROAD



mike937739



Subscribe

2.1K

23,853 views

[Wiring Lights using Copper Foil Tape](#)

Using Copper Foil tape that is normally used for stained glass to wire LED lights on a train layout.

Communications & Signals - Then & Now



Communications and Signals:Then and Now

Communications & Signals - Then & Now

Take a look at how communications & signal systems have evolved over the last 100 years and played a pivotal role in railroad operations.

BNSF Day at the Colorado Model RR Museum



Santa Fe Coal Train at the Colorado Model Railroad Museum BNSF Days



Bill Rogers

 Subscribe 9.7K

38,915 views

[BNSF Day at Colorado Model RR Museum](#)

Follow a late 1960's Santa Fe coal train around the Colorado Model Railroad Museum during BNSF Day. A pair of SD39s with a pair of GP35's sandwiched in between pull a coal train around this very impressive train layout.

Z

Videos From Our Partners

[3 Great Tips to Approach Hand-Laying Switches](#)



Micro-Mark Partner Video - Hand-laying Switches



82 views

Our Partner, Micro-Mark, offers 3 great tips to approach hand-laying model railroad switches.

[How to Approach Hand-Laying Switches](#)

Don't forget to visit the [Partnership Program](#) page on our website to get great deals and discounts!

::

Editor: [Paul V. Voelker](#)

Contributing Editors: Tom Bensberg and Philip Sharp

Executive Editor: [Gerry Leone, MMR, HLM](#)

The NMRA Turntable is an official monthly production of the National Model Railroad Association, Inc. Publishing Department ([Don Phillips](#), Manager). Its purpose is to introduce NMRA members to a selection of instructional videos and online publications that they may find of interest. If you know of an NMRA member who is not receiving this mailing, please direct them to [here](#) to update their email address. If you no longer wish to receive these mailings, please don't mark them as SPAM. Instead, click the Safe Unsubscribe link at the bottom of this page. ©2017 National Model Railroad Association, Inc., P.O. Box 1328, Soddy Daisy TN 37384.

STAY CONNECTED:

